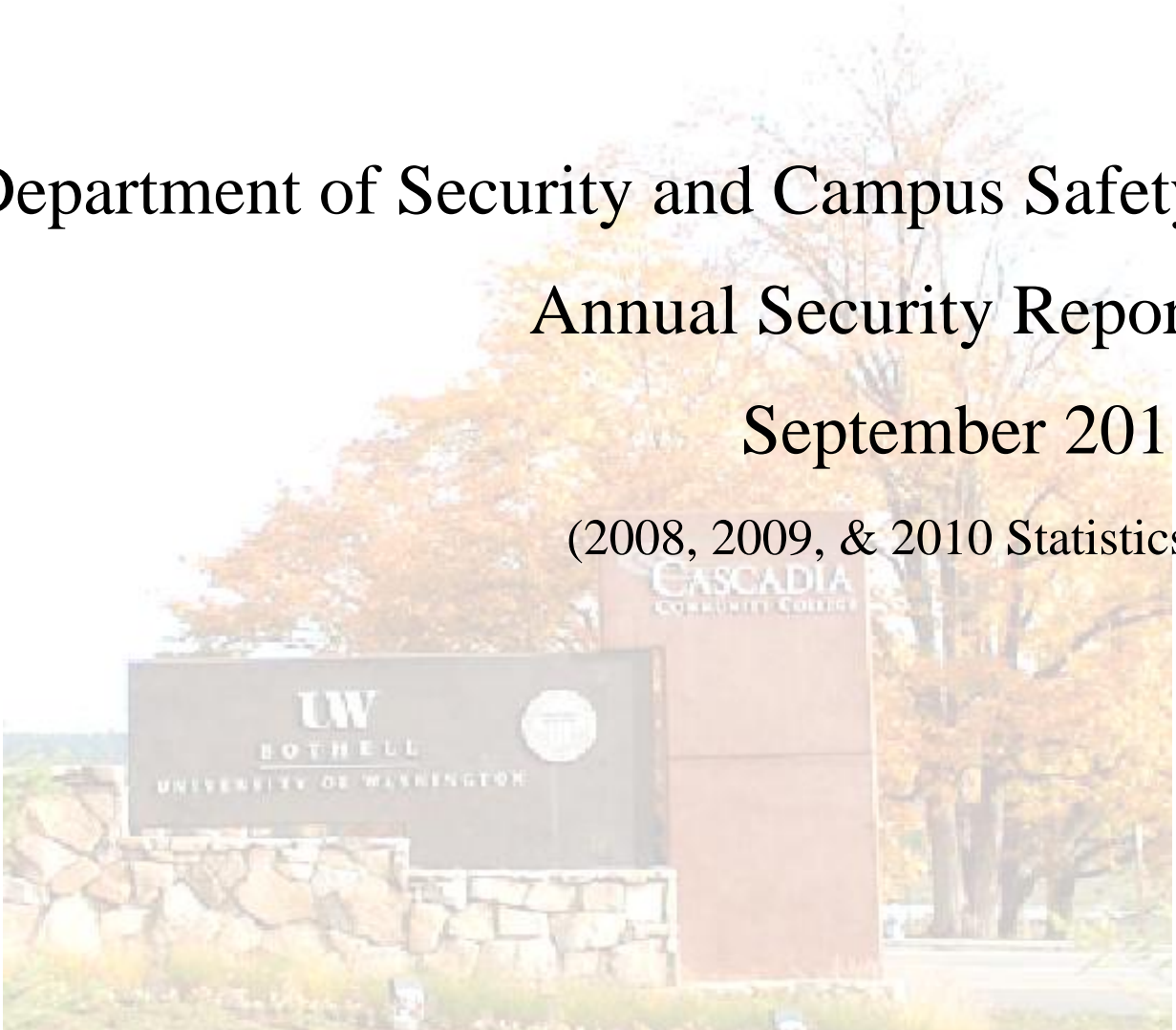


University of Washington Bothell Cascadia Community College

Department of Security and Campus Safety Annual Security Report September 2011 (2008, 2009, & 2010 Statistics)



The following information has been prepared to increase your awareness of the current programs that exist to protect your safety and well-being. Portions are also provided in compliance with laws of the State of Washington (RCW 28B.10.569), the federal Safe and Drug-Free Schools and Communities Act (20 USC 1145g), and the Higher Education Opportunity Act (Title 20 U.S. Code Section 1092 Disclosure of Campus Security Policy and Campus Crime Statistics), also known as the Jeanne Clery Act.

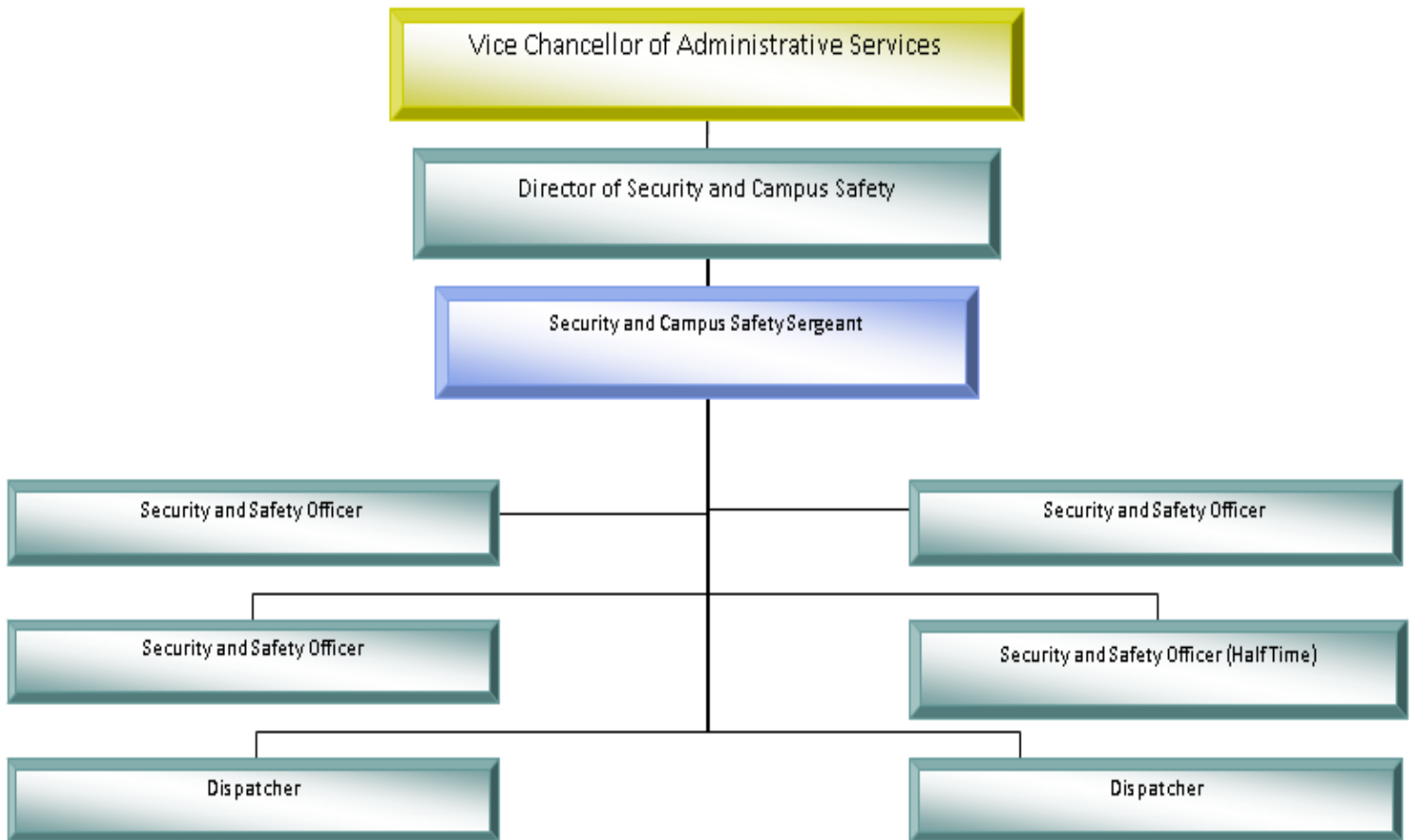


Security and Campus Safety Annual Security Report

Table of Contents

<i>Table of Contents</i>	2
<i>Security and Safety Personnel</i>	3
<i>How to Contact Security and Campus Safety</i>	4
<i>Reporting an Incident</i>	4
<i>Security and Campus Safety Mission & Goal</i>	4
<i>Security and Campus Safety Services – We provide:</i>	4
<i>Crime Log</i>	5
<i>Timely Warnings</i>	5
<i>Sexual Assault Prevention and Response</i>	5
<i>Date Rape Drugs</i>	7
<i>Registered Sex Offenders</i>	7
<i>Weapons Policy</i>	8
<i>Alcohol/Drug Policy</i>	8
<i>Definitions of Crime Categories</i>	8
<i>Emergency Evacuation</i>	9
<i>Crime Statistics – Cascadia Community College</i>	11
<i>Crime Statistics – University of Washington, Bothell</i>	13
<i>Community Resources</i>	15
<i>Campus Safety Map</i>	16

Security and Campus Safety Personnel



The Department of Security and Campus Safety serves two colleges, the University of Washington Bothell and Cascadia Community College, on a co-located campus in Bothell, Washington. Security and Campus Safety is comprised of a Director, a Sergeant, four Officers, two hourly Officers, and two full-time Dispatchers.

The Security and Safety Officers have the authority to ask persons for identification and to determine whether individuals have lawful business on our campus. Security and Safety Officers have the authority to issue traffic tickets, which are billed through each institution. Security and Safety Officers do not possess arrest power. Criminal incidents are referred to the local police, who have jurisdiction on the campus. The Department of Security and Campus Safety maintains a highly professional working relationship with the Bothell Police Department. All crime victims and witnesses are strongly encouraged to immediately report the crime to the Department of Security and Campus Safety and the appropriate police agency. Prompt reporting will ensure timely warning notices on-campus and timely disclosure of crime statistics.

If you are the victim of a crime and do not want to pursue action within the University of Washington Bothell/Cascadia Community College or criminal justice system, you may still want to consider making a confidential report. With your permission, the Security and Campus Safety Director or a designee can file a report on the details of the incident without revealing your identity. The purpose of a confidential report is to comply with your wish to keep the matter confidential, while taking steps to ensure the future safety of yourself and others. With such information, we can keep accurate records of the number of incidents involving students, staff and faculty, determine patterns in location, method, or subjects, and alert the campus community to potential danger. Reports filed in this manner are counted and disclosed in the annual crime statistics.

How to Contact Security and Campus Safety

Reporting an Incident

1. If it is a life or death emergency, please call 911 first in order to get Bothell Police or Fire response.
2. Call (425) 352-5222 for on-campus Security and Campus Safety emergency response, such as medical aid needed, or an assault. Or press the Emergency button on a campus phone for direct-dial access.
3. Call (425) 352-5359 for on-campus Security and Campus Safety non-emergencies, such as Lost & Found checks or Card Access issues. Email: safety@uwb.edu.

The Security and Campus Safety website, which includes services, responsibilities, and right-to-know information, is located at <http://www.uwb.edu/safety>.

Security and Campus Safety Hours

Security and Campus Safety Officers are available from 6 am to 11 pm Monday-Thursday and until 10 pm Friday, from 7:30am to 6:30pm Saturday, and from 11:30am to 8:30 pm on Sunday.

There are emergency phones located throughout the campus and garages. Pushing the button will connect you immediately to a Bothell Police Dispatcher. See the Safety Map on the following page for emergency phone locations.

Security and Campus Safety Mission & Goal

The mission of the Security and Campus Safety Department is to provide professional security and safety services to the University of Washington Bothell and Cascadia Community College communities.

It is the goal of the Security and Campus Safety Department to create and maintain a sense and feeling of safety and security to enhance the teaching and learning environment for the entire campus community.

Security and Campus Safety Services – We provide:

- Crime Prevention seminars – Offered to students, staff and faculty throughout the year.
- Safety escorts to students, staff, and faculty
- Lost & Found program
- Key and Card access
- Traffic control and traffic enforcement

Crime Log

The Security and Campus Safety Department maintains a Daily Log of all incidents reported to campus security, including crimes that are transferred to the Bothell Police Department for investigation. Information provided in the log includes type of event, date and time reported, date and time occurred, general location of the event and disposition if known.

The daily crime log is available by contacting the Security and Campus Safety Office during business hours. Any person may request to see the log. The log contains information for the most recent 60 day period. Requests for information older than sixty days will be made available.

Timely Warnings

In the event that a situation arises either on or off campus that, in the judgment of the Security and Campus Safety Director, constitutes an ongoing or continuous threat, a campus “timely warning” will be issued.

Depending on the particular circumstances of the crime, especially in situations that could pose an immediate threat to the community and individuals, the Security and Campus Safety Department may employ a number of different mechanisms, such as mass email or mass notification system, to notify the campus of the threat

Anyone with information warranting a timely warning should report the circumstances to the Security and Campus Safety Department by phone (425) 352-5222, or in person at the LB2 building in central campus.

Sexual Assault Prevention and Response

Our campus is committed to providing its students with an environment conducive to the pursuit of knowledge. Admission to the institutions on this campus carries with it the presumption that students will conduct themselves as responsible members of the community, refraining from actions that would endanger the health, welfare or safety of others. Conduct constituting a sexual offense, whether forcible or non-forcible, will not be tolerated. Students committing sexual offenses in any form can be prosecuted under the Washington State criminal statutes and/or subject to disciplinary action under the Student Conduct Codes (WAC 478-120-010-145) (WAC 132Z-115-090).

The Washington State Criminal Code (RCW 9A) defines rape as engaging in sexual intercourse with another person by forcible compulsion; or when the victim is incapable of consent by reason of being physically helpless or mentally incapacitated (e.g., when the victim has consumed alcohol and/or other drugs, either voluntarily or involuntarily); or when the victim does not consent to sexual intercourse with the perpetrator and such lack of consent was expressed by the victim's words or conduct.

In some instances the victim may know the assailant and often does not realize the incident meets the legal definition of rape. The definition of sexual assault is not limited to rape, and may include other acts as defined in RCW 9A. A sexual assault may involve any unwanted touching with a sexual motivation.

Acquaintance rape may fall into any of the following categories: First or second degree rape, Class A felonies punishable under the Washington State Criminal Code by up to life in prison and/or a \$50,000 fine; third-degree, Class C felony punishable by up to five years in prison and/or a \$10,000 fine.

When they occur on campus, rape and other forcible or non-forcible sex offenses also violate the Student Conduct Code and may result in a variety of disciplinary actions, including suspension or permanent dismissal from the college. In cases involving an alleged sexual offense, the accuser and the accused have the same right to have others present during a disciplinary hearing. Both the accuser and accused shall be informed of the outcome of any campus disciplinary proceeding as a result of an alleged sexual assault. The victim's academic and living situations (if in campus housing) will be changed upon request if reasonably available.

If you or someone you know is the victim of a sexual assault, report it immediately to the police. Except in cases involving domestic violence offenses, reporting the incident to the police does not mean that charges will be pressed, but it will be easier if you decide to do so later. There are on and off-campus resources to help you. Trained staff members assist victims in coping with the aftermath of assaults and in exploring available options confidentially. You are encouraged to tell someone and to seek help from the resources listed on the next page.

Prevention, intervention and education programs specifically addressing rape, acquaintance rape and other sexual offenses are regularly offered at the UWB/CCC campus.

If a sexual offense should occur, the victim should take the following actions:

- Go to a safe place.
- Call the Security and Campus Safety Department if the incident occurred on campus; call the local police if the incident occurred off campus. The Security and Campus Safety Department will notify the local police of the incident if the victim wishes their assistance.
- The Security and Campus Safety Department or the police will contact counseling and victim's advocate services.
- Contact a friend or family member.
- Do not shower, bathe, or douche.
- Do not urinate, if possible.
- Do not eat, drink liquids, smoke or brush teeth if oral contact took place.
- Keep the clothes worn during the offense. If clothes are changed, place clothes in paper bag (evidence deteriorates in plastic).
- Get prompt medical attention.
- Do not destroy the physical evidence that may be found in the area of the crime. If the crime occurred in the victim's home, the victim should not clean or straighten until the police have had an opportunity to collect evidence.
- Tell someone all details remembered about the assault.
- Write down all details remembered as soon as possible.

Following an incident, victims are encouraged to make a report to campus or local police. This action does not obligate prosecution, but it does make legal action possible if the decision to prosecute is made at a later date. The earlier an incident is reported, the easier it is to collect valuable evidence.

Victims have the option of keeping their report of sexual assault in complete confidence, protecting their right to anonymity, when making a report through the campus Security and Campus Safety Department.

Registered Sex Offenders

The federal Campus Sex Crimes Prevention Act, enacted on October 28, 2000, requires institutions of higher learning to issue a statement advising the campus community where law enforcement agency information concerning registered sex offenders may be obtained. Under state law, registered sex offenders must provide notice to each institution of higher learning in

the state at which the person is employed, volunteers, carries on a vocation or is a student. The Security and Campus Safety Department maintains records of registered sex offenders who are students or employed at the University or Cascadia Community College and who have been brought to its attention by either the Bothell Police Department or King County Sheriff's Office. The Security and Campus Safety Office will release information concerning registered sex offenders according to the provisions of RCW 4.24.550. In Washington State, sex offenders must register with their local police department. This information about registered sex offenders appears on the Washington Association of Sheriffs and Police Chiefs Web site: <http://ml.waspc.org/>.

Weapons Policy

The possession or use of firearms, explosives, dangerous chemicals or other dangerous weapons or instrumentalities on the University or college campus, except for authorized University purposes, is prohibited by WAC 478-124-020(2)(e), 478-120-020(3)(f), and WAC 132Z-115-090(18).

Alcohol and Illegal Drugs

With a view toward ensuring the safety and well-being of faculty, staff, students and the general public, the University is committed to maintaining a campus environment that is free of illicit drugs (or controlled substances) and alcohol. Accordingly, the consumption of alcoholic beverages by students and employees on campus property, except in accordance with appropriate State of Washington liquor license procedures, is prohibited. Further, the unlawful possession, use, distribution or manufacture of alcohol or controlled substances (as defined in Chapter 69.50 RCW) on the campus or during University or college-sponsored activities is prohibited (Chapter 478-124 WAC and WAC 132Z-115-090(10)). Violation of these alcohol and drug prohibitions will be the basis for disciplinary or other appropriate action.

Definitions of Crime Categories

1. Part I crimes: As defined by the Uniform Crime Reporting standards developed by the Federal Bureau of Investigation and the Department of Justice, Part 1 crimes are the more serious violent crimes against persons - - Murder, Rape, Robbery, and Aggravated Assault --, and the more serious crimes against property – Burglary, Arson, and Theft.

2. Murder:

Non-negligent Manslaughter: The willful killing of one human being by another.

Negligent manslaughter: The killing of another person by gross negligence.

3. Sex offenses:

Forcible - Any sexual act directed against another person, forcibly or against that person's will. Includes forcible rape, forcible sodomy, sexual assault with an object, and forcible fondling.

Non-forcible - Unlawful sexual intercourse – incest and statutory rape.

4. Robbery: The taking, or attempted taking, of anything of value from one person by another, in which the offender uses force or the threat of violence.
5. Aggravated assault: An attack by one person upon another, in which the offender uses or displays a weapon in a threatening manner or the victim suffers severe injury involving broken bones, loss of teeth, possible internal injury, severe laceration, or loss of consciousness.
6. Burglary: The unlawful entry into a building or other structure with the intent to commit a felony or a theft.
7. Motor vehicle theft: The theft of a motor vehicle, including automobiles, motorcycles, golf carts, and mopeds.
8. Arson: Any willful or malicious burning or attempt to burn, with or without intent to defraud, a dwelling, house, a public building, a motor vehicle or aircraft, or personal property of another.
9. Hate crimes: Any crime in which the victim is intentionally selected because of the actual or perceived race, gender, religion, sexual orientation, ethnicity, or disability of the victim.
10. Disciplinary actions: Action taken against a person for committing a violation of campus policy that may or may not violate state or federal laws. Includes students and employees.
11. Liquor laws: The violation of laws prohibiting the manufacture, sale, purchase, transportation, possession, or use of alcoholic beverages. Driving under the influence violations is excluded.
12. Drug laws: The violation of laws prohibiting the unlawful possession, sale, use, growing, manufacture, and making of narcotic drugs.
13. Weapons laws: The violation of laws prohibiting the manufacture, sale, purchase, transportation, possession, concealment, or use of firearms, or use of firearms, knives, explosives, or other deadly weapons.

Emergency Evacuation

In the event of a significant incident (major earthquake, hazardous material incident, for example) or crises that may affect the safety of the campus community, students, faculty, staff and/or guests at the University may be asked to evacuate a building, several buildings, a portion of the campus or the entire campus. Due to the unpredictability of these situations, students, faculty, staff and guests are to follow building and campus evacuation protocols and obey

directions from University officials and on-scene emergency responders that can include but are not limited to the Bothell Police Department, the Bothell Fire Department, King County Sheriff's Office, etc.

Specific instruction may be given to report to a building assembly point, gather at a designated on-campus Mass Assembly Area, or evacuate the campus entirely. Alternately, instruction may be given to the UW Community and the general public to take shelter where they are (shelter-in-place) or at a designated area or building.

Clery Campus Crime Statistics CCC 2010

Total Crimes:

OFFENSE	YEAR	ON-CAMPUS	PUBLIC AREAS
MURDER/NON-NEGLIGENT MANSLAUGHTER	2010	0	0
	2009	0	0
	2008	0	0
NEGLIGENT MANSLAUGHTER	2010	0	0
	2009	0	0
	2008	0	0
SEX OFFENSES, FORCIBLE (forcible rape, sodomy, sexual assault w/object, forcible fondling)	2010	0	0
	2009	0	0
	2008	0	0
SEX OFFENSES, NON-FORCIBLE (incest and statutory rape)	2010	0	0
	2009	0	0
	2008	0	0
ROBBERY	2010	0	0
	2009	0	0
	2008	0	0
AGGRAVATED ASSAULT	2010	0	0
	2009	0	0
	2008	0	0
BURGLARY	2010	0	0
	2009	2	0
	2008	1	0
MOTOR VEHICLE THEFT (Includes: theft attempts)	2010	1	0
	2009	0	0
	2008	1	0
ARSON	2010	0	0
	2009	0	0
	2008	0	0
LIQUOR LAW ARRESTS	2010	0	0
	2009	0	0
	2008	0	0
DRUG ARRESTS	2010	0	0
	2009	0	0
	2008	0	0
WEAPON LAW ARRESTS	2010	0	0
	2009	0	0
	2008	0	0
HATE CRIMES	2010	0	0
	2009	0	0
	2008	0	0

DISCIPLINARY REFERRALS

OFFENSE	YEAR	ON-CAMPUS	PUBLIC AREAS
LIQUOR LAW REFERRALS	2010	1	0
	2009	0	0
	2008	0	0
DRUG LAW REFERRALS	2010	0	0
	2009	0	0
	2008	0	0
WEAPON LAW REFERRALS	2010	0	0
	2009	0	0
	2008	0	0

Clery Campus Crime Statistics UWB 2010

Total Crimes:

OFFENSE	YEAR	ON-CAMPUS	NON-CAMPUS	PUBLIC AREAS
MURDER/NON-NEGLIGENT MANSLAUGHTER	2010	0	0	0
	2009	0	0	0
	2008	0	0	0
NEGLIGENT MANSLAUGHTER	2010	0	0	0
	2009	0	0	0
	2008	0	0	0
SEX OFFENSES, FORCIBLE (forcible rape, sodomy, sexual assault w/object, forcible fondling)	2010	0	0	0
	2009	0	0	0
	2008	0	0	0
SEX OFFENSES, NON-FORCIBLE (incest and statutory rape)	2010	0	0	0
	2009	0	0	0
	2008	0	0	0
ROBBERY	2010	0	0	0
	2009	0	0	0
	2008	0	0	0
AGGRAVATED ASSAULT	2010	0	1	0
	2009	0	0	0
	2008	0	0	0
BURGLARY	2010	0	0	0
	2009	2	0	0
	2008	1	0	0
MOTOR VEHICLE THEFT (Includes: theft attempts)	2010	1	2	0
	2009	0	0	0
	2008	1	0	0
ARSON	2010	0	0	0
	2009	0	0	0
	2008	0	0	0
LIQUOR LAW ARRESTS	2010	0	0	0
	2009	0	0	0
	2008	0	0	0
DRUG ARRESTS	2010	0	0	0
	2009	0	0	0
	2008	0	0	0
WEAPON LAW ARRESTS	2010	0	0	0
	2009	0	0	0
	2008	0	0	0

HATE CRIMES	2010	0	2	0
	2009	0	0	0
	2008	0	0	0

DISCIPLINARY REFERRALS

OFFENSE	YEAR	ON-CAMPUS	NON-CAMPUS	PUBLIC AREAS
LIQUOR LAW REFERRALS	2010	1	8	0
	2009	0	0	0
	2008	0	0	0
DRUG LAW REFERRALS	2010	0	0	0
	2009	0	0	0
	2008	0	0	0
WEAPON LAW REFERRALS	2010	0	0	0
	2009	0	0	0
	2008	0	0	0

Community Resources

Al-Anon (24 hours) 206.625.0000

Alcohol and Drug 24-hour Help Line 206.722.3700 (WA only) 1.800.562.1240

Alcoholics Anonymous (24 hours) 206.587.2838

Bothell Police Department (425) 486-1254 (Non-emergency) 911 Emergency

Crisis Clinic 24-hour crisis line 1.866.427.4747 206.461.3219 TTY/TDD

Domestic Violence Hotline (24 hours) 1.800.562.6025

Evergreen Hospital Emergency Department (425) 899-1700

Harborview Center for Sexual Assault and Traumatic Stress (8:30 a.m.–5:00 p.m., M-T, Th-F, 9-5 on W) 206.744.1600

Harborview Medical Center Emergency Trauma 24-hour 206.744.3074

King County Jail Inmate Lookup <http://ingress.kingcounty.gov/inmatelookup/>

King County Protection Orders <http://www.kingcounty.gov/courts/Clerk/ProtectionOrders.aspx>

King County Sexual Assault Resource Center (24 hours) 1.888.998.6423

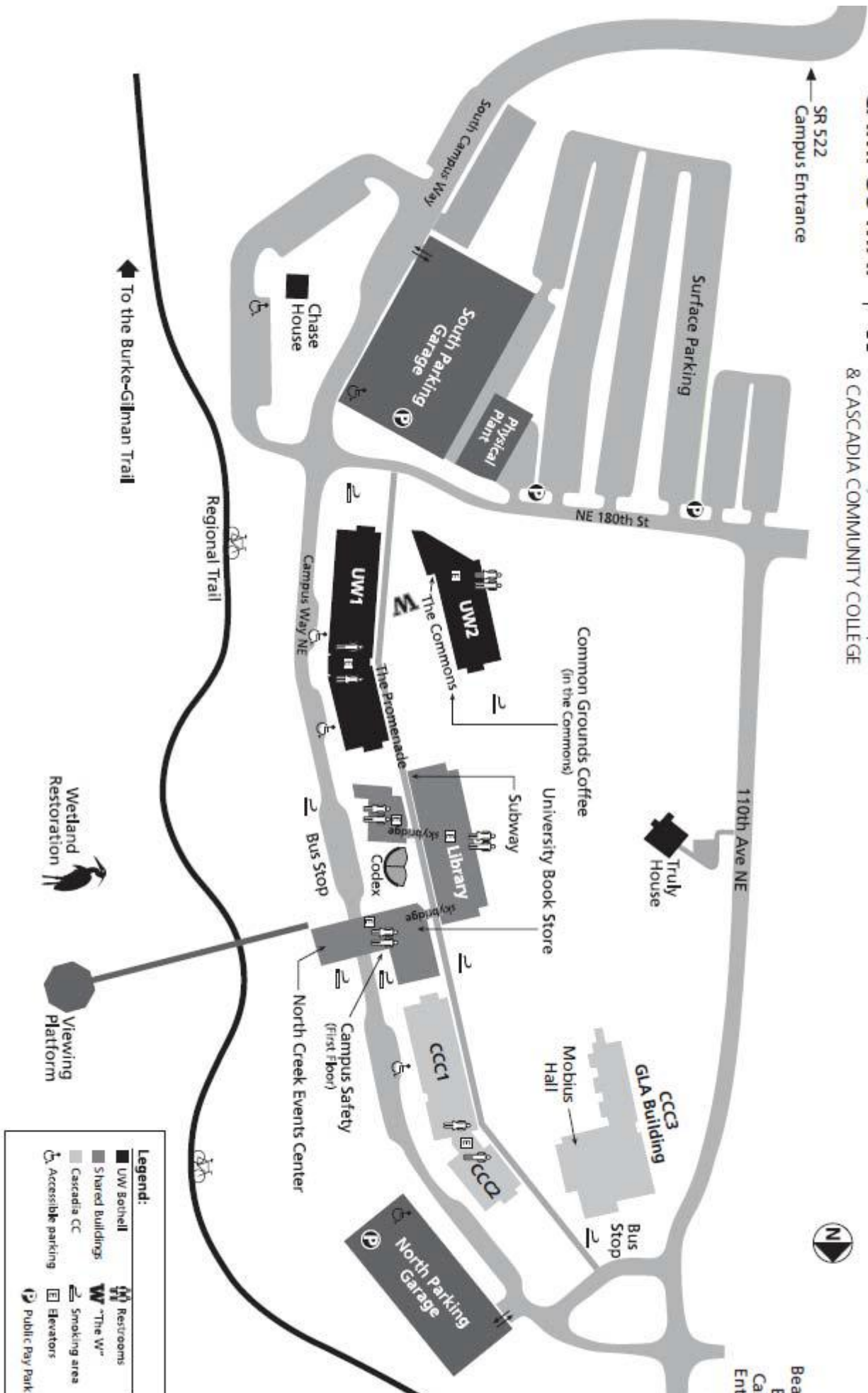
Poison Center 1.800.222.1222

Sex Offender List - WA state <http://ml.waspc.org/>

Seattle Police Department, Non-Emergency 206.625.5011

Washington State Domestic Violence Hotline (24 hours) 1.800.562.6025 (V/TTY)

CAMPUS MAP | UW UNIVERSITY of WASHINGTON | BOTHELL & CASCADIA COMMUNITY COLLEGE



Legend:

	UW Bothell		Restrooms
	Shared Buildings		"The W"
	Cascadia CC		Smoking area
	Accessible parking		Elevators
	Public Pay Parking		