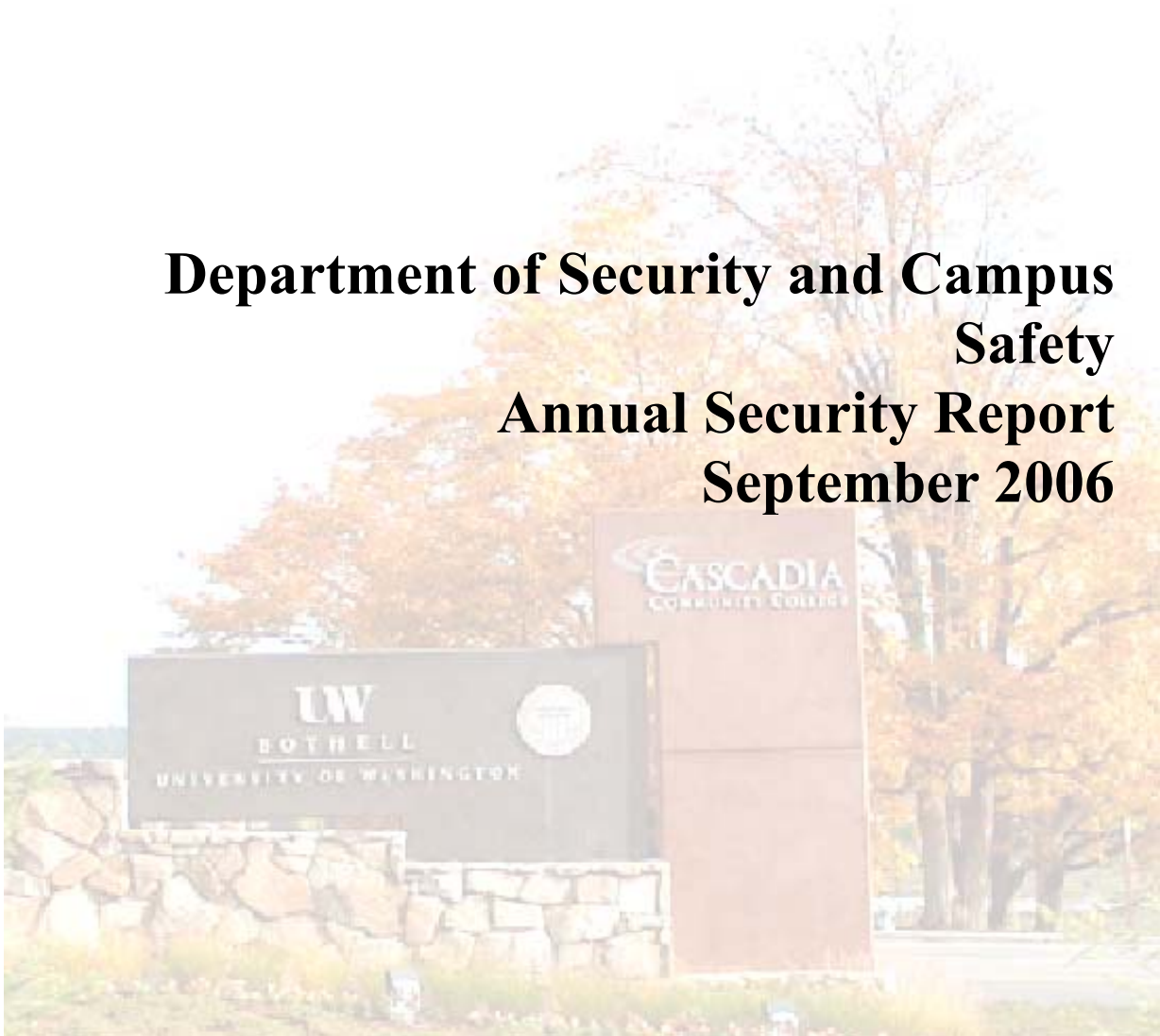


University of Washington Bothell Cascadia Community College

Department of Security and Campus Safety Annual Security Report September 2006



*In compliance with the Federal Jeanne Clery Disclosure of
Campus Security Policy and Campus Crime Statistics Act of 1998.*

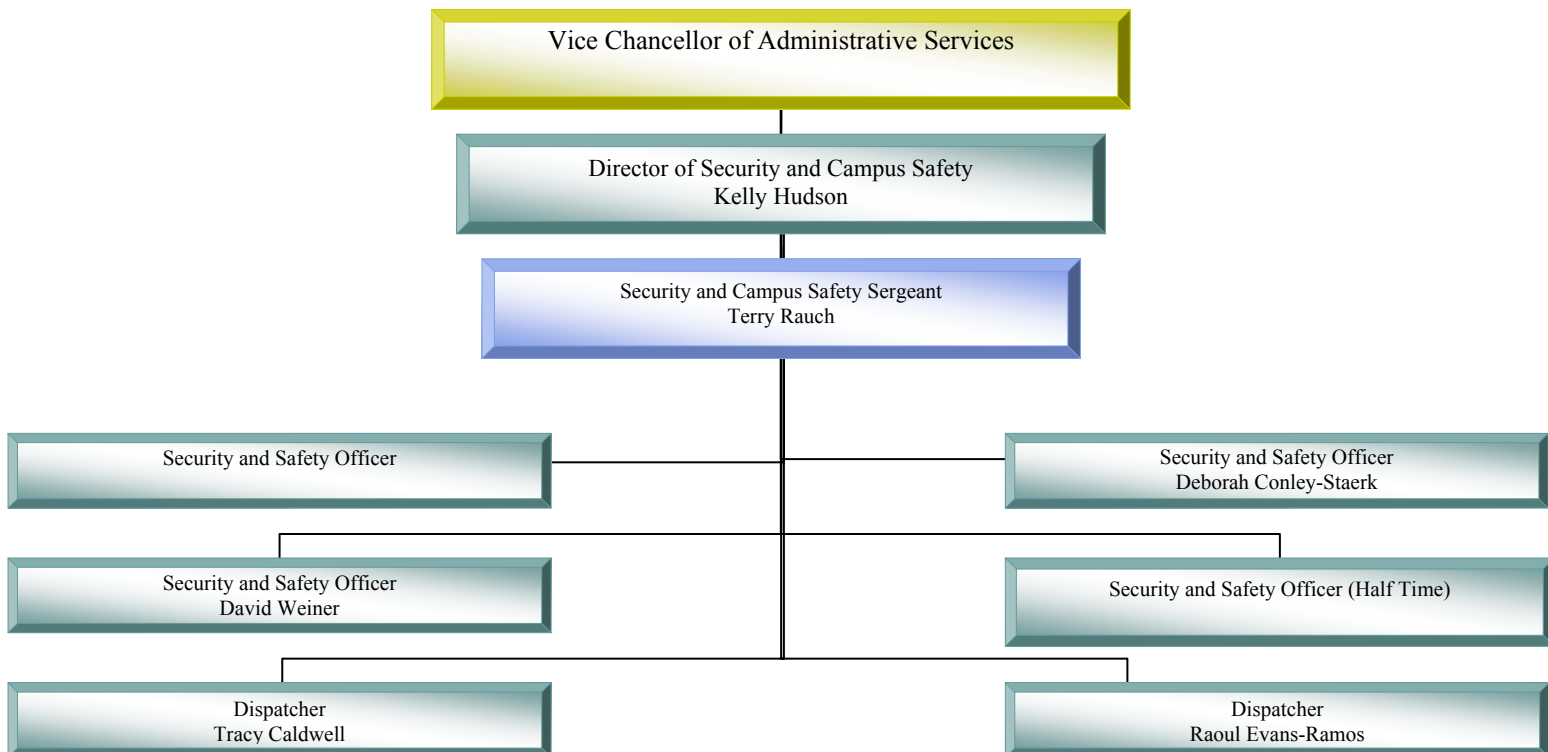
⋮

Security and Campus Safety Annual Security Report

Table of Contents

<i>Table of Contents</i>	2
<i>Security and Safety Personnel</i>	3
<i>How to Contact Security and Campus Safety</i>	4
Reporting an Incident	4
Security and Campus Safety Mission & Goal	4
Security and Campus Safety Services – We provide:	4
<i>Timely Warnings</i>	5
<i>Sexual Assault Prevention and Response</i>	5
Date Rape Drugs	7
<i>Community Resources</i>	7
<i>Annual Crime Statistics</i>	8
<i>Definitions of Crime Categories</i>	9
<i>Campus Safety Map</i>	10

Security and Campus Safety Personnel



The Department of Security and Campus Safety serves two colleges on a combined campus. Security and Campus Safety is comprised of a Director, a Sergeant, five Officers, two hourly Officers, two full-time Dispatchers and one hourly Dispatcher.

The Security and Safety Officers have the authority to ask persons for identification and to determine whether individuals have lawful business on our campus. Security and Safety Officers have the authority to issue traffic tickets, which are billed through each institution. Security and Safety Officers do not possess arrest power. Criminal incidents are referred to the local police, who have jurisdiction on the campus. The Department of Security and Campus Safety maintains a highly professional working relationship with the Bothell Police Department. All crime victims and witnesses are strongly encouraged to immediately report the crime to the Department of Security and Campus Safety and the appropriate police agency. Prompt reporting will ensure timely warning notices on-campus and timely disclosure of crime statistics.

If you are the victim of a crime and do not want to pursue action within the University of Washington Bothell/Cascadia Community College or criminal justice system, you may still want to consider making a confidential report. With your permission, the Security and Campus Safety Director or a designee can file a report on the details of the incident without revealing your identity. The purpose of a confidential report is to comply with your wish to keep the matter confidential, while taking steps to ensure the future safety of yourself and others. With such information, we can keep accurate records of the number of incidents involving students, staff and faculty, determine patterns in location, method, or subjects, and alert the campus community to potential danger. Reports filed in this manner are counted and disclosed in the annual crime statistics.



How to Contact Security and Campus Safety

Reporting an Incident

1. If it is a life or death emergency, please call 911 first in order to get Bothell Police or Fire response.
2. Call (425) 352-5222 for on-campus Security and Campus Safety **emergency** response, such as medical aid needed, or an assault. Or press the Emergency button on a campus phone for direct-dial access.
3. Call (425) 352-5359 for on-campus Security and Campus Safety non-emergencies, such as Lost & Found checks or Card Access issues. Email: safety@bothell.washington.edu.

The Security and Campus Safety website, which includes services, responsibilities, and right-to-know information, is located at <http://www.uwb.edu/safety>.

Security and Campus Safety Hours

Security and Campus Safety Officers are available from 6 am to 11 pm Monday-Thursday and until 10 pm Friday, from 7am to 7pm Saturday, and from 11am to 8 pm on Sunday.

There are emergency phones located throughout the campus and garages. Pushing the button will connect you immediately to a Bothell Police Dispatcher. See the Safety Map on the following page for emergency phone locations.

Security and Campus Safety Mission & Goal

The mission of the Security and Campus Safety Department is to provide professional security and safety services to the University of Washington Bothell and Cascadia Community College community.

It is the goal of the Security and Campus Safety Department to create and maintain a sense and feel of safety and security to enhance the teaching and learning environment for the entire campus community.

Security and Campus Safety Services – We provide:

- Crime Prevention seminars – Offered to students, staff and faculty throughout the year.
- Safety escorts to students, staff, and faculty
- Lost & Found program
- Key and Card access
- Traffic Control and traffic enforcement

- Sex Offender notification – Information explaining sex offender levels and sex offenders on our campus is posted on our website: <http://www.uwb.edu/safety>

Timely Warnings

In the event that a situation arises either on or off campus that, in the judgment of the Security and Campus Safety Director, constitutes an ongoing or continuous threat, a campus “timely warning” will be issued.

Depending on the particular circumstances of the crime, especially in situations that could pose an immediate threat to the community and individuals, the Security and Campus Safety Department may employ a number of different mechanisms to notify the campus of the threat.

Anyone with information warranting a timely warning should report the circumstances to the Security and Campus Safety Department by phone (425) 352-5222, or in person at the LB2 building on the south end of campus.

Sexual Assault Prevention and Response

Our campus is committed to providing its students with an environment conducive to the pursuit of knowledge. Admission to the institutions on this campus carries with it the presumption that students will conduct themselves as responsible members of the community, refraining from actions that would endanger the health, welfare or safety of others. Conduct constituting a sexual offense, whether forcible or nonforcible, will not be tolerated. Students committing sexual offenses in any form can be prosecuted under the Washington State criminal statutes and/or subject to disciplinary action under the Student Conduct Codes (WAC 478-120-010-145) (WAC 132Z-115-090).

The Washington State Criminal Code (RCW 9A) defines rape as engaging in sexual intercourse with another person by forcible compulsion; or when the victim is incapable of consent by reason of being physically helpless or mentally incapacitated (e.g., when the victim has consumed alcohol and/or other drugs, either voluntarily or involuntarily); or when the victim does not consent to sexual intercourse with the perpetrator and such lack of consent was expressed by the victim’s words or conduct.

In some instances the victim may know the assailant and often does not realize the incident meets the legal definition of rape. The definition of sexual assault is not limited to rape, and may include other acts as defined in RCW 9A. A sexual assault may involve any unwanted touching with a sexual motivation.

Acquaintance rape may fall into any of the following categories: First or second degree rape, Class A felonies punishable under the Washington State Criminal Code by up to life in prison and/or a \$50,000 fine; third-degree, Class C felony punishable by up to five years in prison and/or a \$10,000 fine.

Date Rape Drugs

Date rape drugs can be placed in any drink, not just alcohol. Effects may range from a feeling of well being and short term memory loss to an apparent aphrodisiac and intoxication effect. Serious adverse effects can occur such as seizures, insomnia, anxiety, nausea, dizziness, hallucinations, coma, even death.

Some common side effects of these drugs include a drunken appearance, drowsiness, light-headedness, staggering, confusion, muscle relaxation and amnesia that lasts up to 24 hours.

If one suspects that they or someone they know has been drugged and/or assaulted, first go to a safe place, call the Security and Campus Safety Department or local police if off campus, and seek immediate medical treatment of any injuries, plus urine, blood, pregnancy, and sexually transmitted disease (STD) testing.

Community Resources

Adult Children of Alcoholics	Adultchildren.org
Al-Anon/Alateen (24 hours)	206-625-0000
Alcohol and Drug 24 hour Help Line	800-562-1240
King County Crisis Clinic 24-hour Crisis Line	866-427-4747 / 206-461-3222
Domestic Violence Hotline - Statewide	800-562-6025
Eastside Domestic Violence	800-827-8840 / 425-746-1940
King County Sexual Assault Resource Center	888-998-6423

As a condition of enrollment on our campus, all students assume responsibility to observe standards of conduct that will contribute to the pursuit of academic goals and to the welfare of the academic community. Specific instances of misconduct include, but are not limited to: Possession or use of firearms, explosives, dangerous chemicals or other dangerous weapons on the University campus, except for authorized University purposes, unless prior written approval has been obtained from the Vice President for Student Affairs, or any other person designated by the President of the University (see WAC 478-124-020 (2)(e)) Unlawful possession, use, distribution, or manufacture of alcohol or controlled substances (as defined in chapter 69.50 RCW) on the campus or during college-sponsored activities.

•
•
•
•
•

Annual Crime Statistics

1.	Part I Criminal Offenses	2003/04	2004/05	2005/06
2.	Murder			
	Non-Negligent Manslaughter	0	0	0
	Negligent Manslaughter	0	0	0
3.	Sex Offenses			
	Forcible Rape	0	0	0
	Non-Forcible Rape	0	0	0
4.	Robbery	0	0	0
5.	Aggravated Assault	0	0	0
6.	Burglary	0	0	0
7.	Motor Vehicle Theft	1	0	1
8.	Arson	0	2	0
9.	Hate Crimes	2003/04	2004/05	2005/06
	Murder			
	Non-Negligent Manslaughter	0	0	0
	Negligent Manslaughter	0	0	0
	Sex Offenses			
	Forcible Rape	0	0	0
	Non-Forcible Rape	0	0	0
	Robbery	0	0	0
	Aggravated Assault	0	0	0
	Burglary	0	0	0
	Motor Vehicle Theft	0	0	0
	Arson	0	0	0
10.	Disciplinary Actions/Arrest	2003/04	2004/05	2005/06
11.	Liquor Law Violations	3	0	1
12.	Narcotics/Drugs Violations	0	2	3
13.	Weapons Violations	1	0	0

*These statistics include numbers from the Bothell Police Department.

*We do not have residential facilities or non campus buildings on our campus.

Definitions of Crime Categories

1. Part I crimes: As defined by the Uniform Crime Reporting standards developed by the Federal Bureau of Investigation and the Department of Justice, Part 1 crimes are the more serious violent crimes against persons - - *Murder, Rape, Robbery, and Aggravated Assault* --, and the more serious crimes against property – *Burglary, Arson, and Theft*.
2. Murder:
 - Non-negligent Manslaughter: The willful killing of one human being by another.
 - Negligent manslaughter: The killing of another person by gross negligence.
3. Sex offenses:
 - Forcible - Any sexual act directed against another person, forcibly or against that person's will. Includes forcible rape, forcible sodomy, sexual assault with an object, and forcible fondling.
 - Non-forcible - Unlawful sexual intercourse – incest and statutory rape.
4. Robbery: The taking, or attempted taking, of anything of value from one person by another, in which the offender uses force or the threat of violence.
5. Aggravated assault: An attack by one person upon another, in which the offender uses or displays a weapon in a threatening manner or the victim suffers severe injury involving broken bones, loss of teeth, possible internal injury, severe laceration, or loss of consciousness.
6. Burglary: The unlawful entry into a building or other structure with the intent to commit a felony or a theft.
7. Motor vehicle theft: The theft of a motor vehicle, including automobiles, motorcycles, golf carts, and mopeds.
8. Arson: Any willful or malicious burning or attempt to burn, with or without intent to defraud, a dwelling, house, a public building, a motor vehicle or aircraft, or personal property of another.
9. Hate crimes: Any crime in which the victim is intentionally selected because of the actual or perceived race, gender, religion, sexual orientation, ethnicity, or disability of the victim.
10. Disciplinary actions: Action taken against a person for committing a violation of campus policy that may or may not violate state or federal laws. Includes students and employees.
11. Liquor laws: The violation of laws prohibiting the manufacture, sale, purchase, transportation, possession, or use of alcoholic beverages. Driving under the influence violations are excluded.
12. Drug laws: The violation of laws prohibiting the unlawful possession, sale, use, growing, manufacture, and making of narcotic drugs.
13. Weapons laws: The violation of laws prohibiting the manufacture, sale, purchase, transportation, possession, concealment, or use of firearms, or use of firearms, knives, explosives, or other deadly weapons.

Campus Safety Map

